



## UMS Web Setup



## Indholdsfortegnelse

UMS Web Setup manual .....	3
Operativ system.....	3
Windows Server 2008 x64 eller Windows Server 2008 x64 R2.....	3
Hvad skal installeres? .....	3
ASP.NET 3.5 (.NET Framework 3.5.1 Features) .....	3
Internet Information Service 7 .....	3
Services.....	4
ASP.NET State Service.....	4
Installer UMS Academic frontend .....	5
Licens .....	8

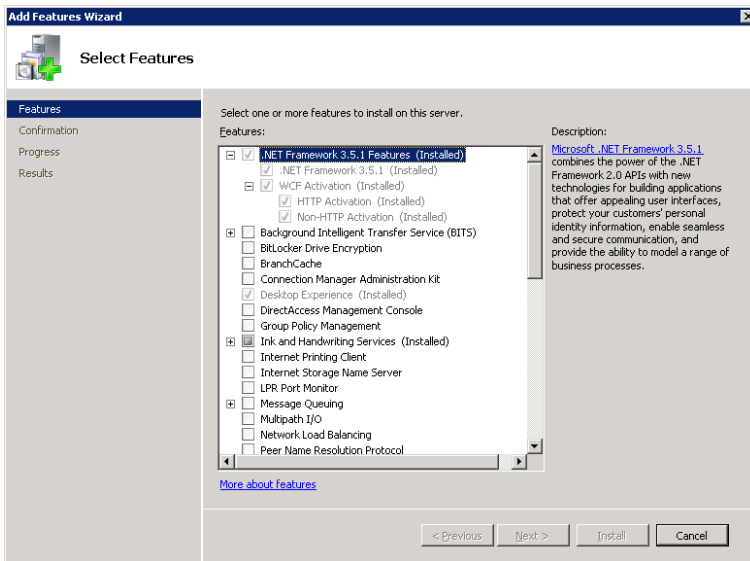
# UMS Web Setup manual

## Operativ system

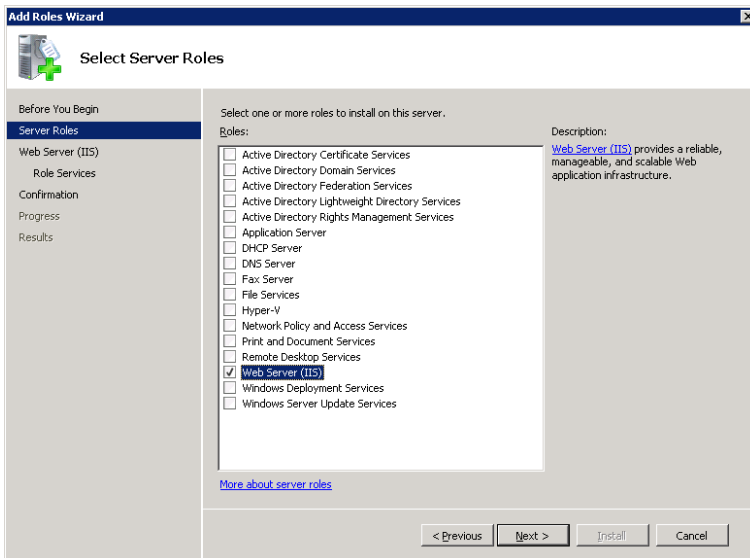
Windows Server 2008 x64 eller Windows Server 2008 x64 R2.

## Hvad skal installeret?

### ASP.NET 3.5 (.NET Framework 3.5.1 Features)

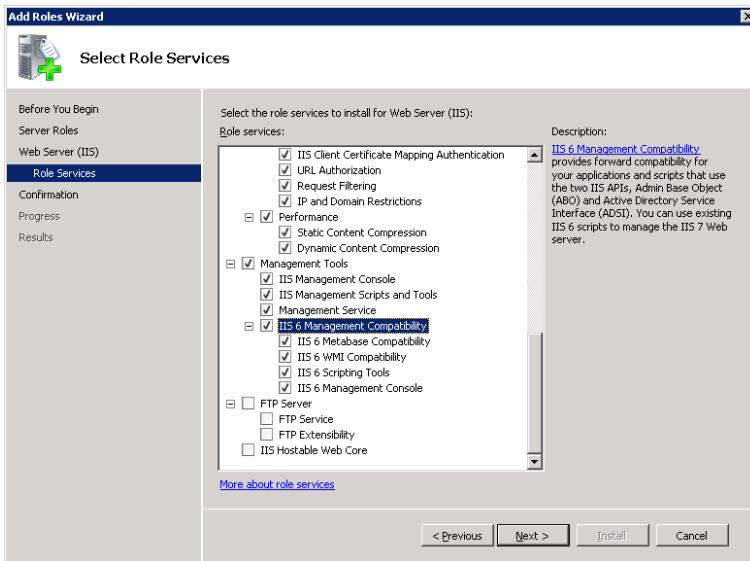


## Internet Information Service 7



Make IT Logic

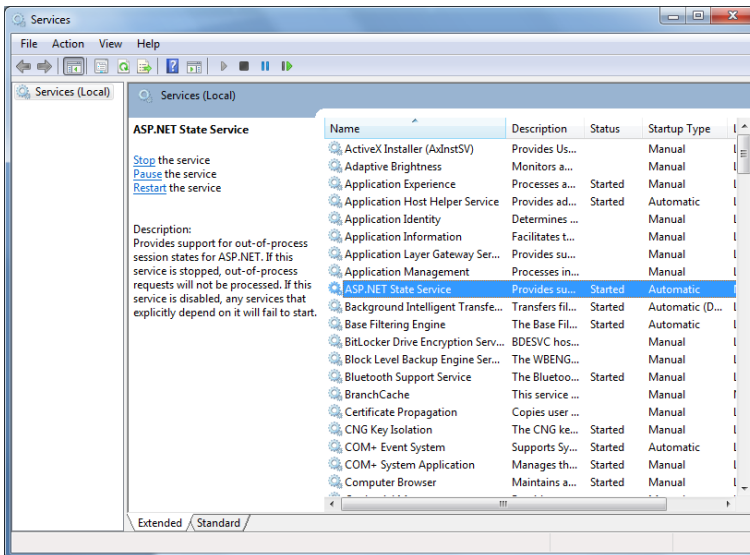
Vælg at installere alle features undtagen de punkter, som ikke er markeret på nedenstående billede.



## Services

### ASP.NET State Service

Denne skal startes og sættes til at starte automatisk.



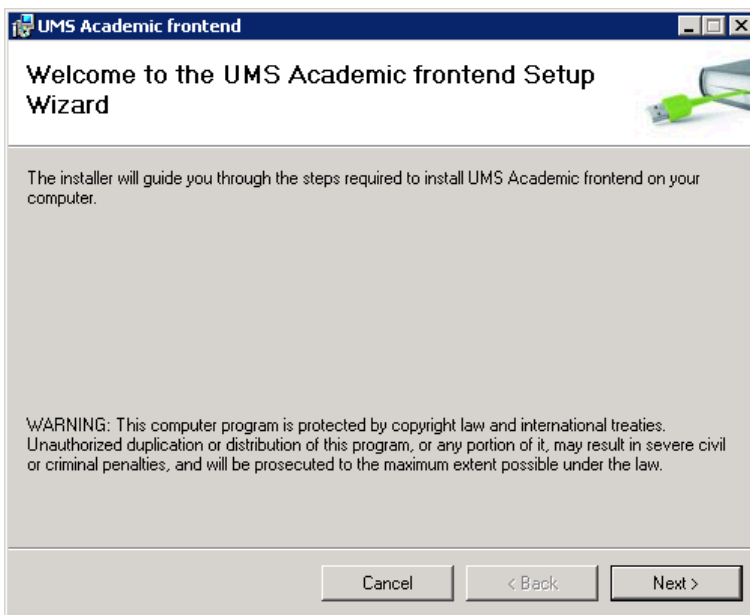
## Installer UMS Academic frontend

Download UMS Web fra vores hjemmeside [http://downloads.inlogic.dk/Latest released stable version/UMSFrontendSetup.zip](http://downloads.inlogic.dk/Latest%20released%20stable%20version/UMSFrontendSetup.zip) og følg nedenstående vejledning.

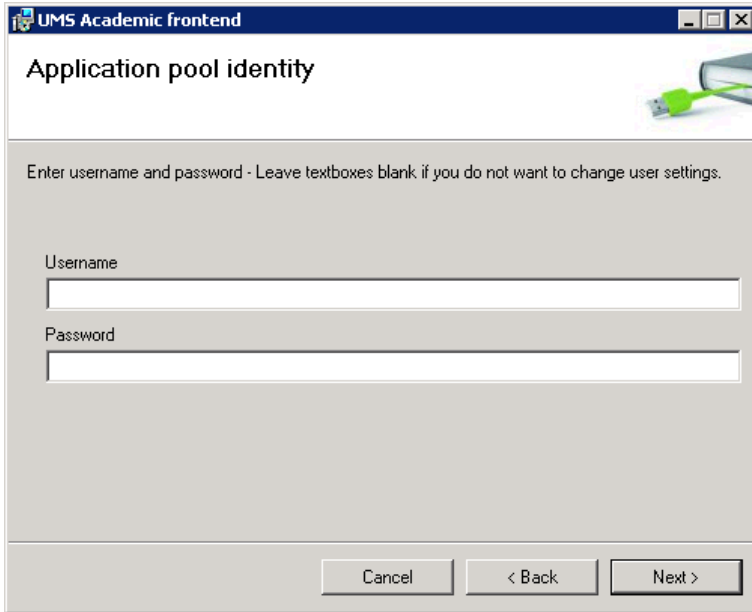
1. Afinstaller tidligere version af UMS Academic frontend. (hvis denne forefindes).
2. Start installationen ved at køre "setup.exe".



Vælg "Run".

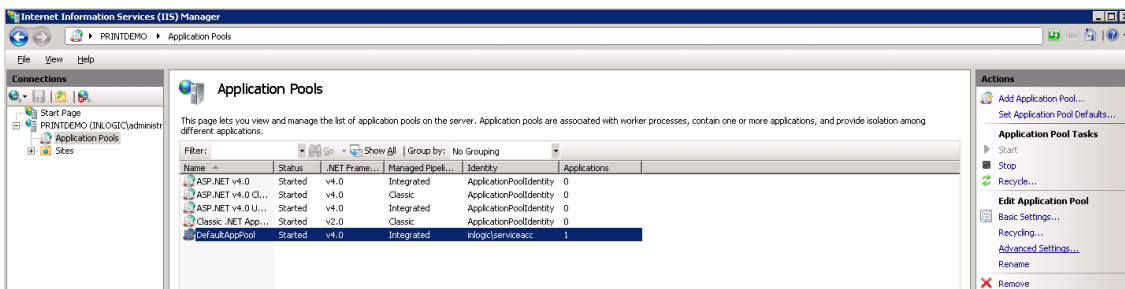


Vælg "Next".



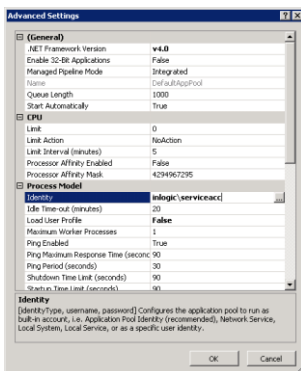
3. Angiv brugernavn (domain\username) og kodeord, hvis en af følgende moduler skal bruges "GuestUser", "MassUsers" eller "Groupfolder". Brugeren, som er ansvarlig for "Scheduled Tasks" kan med fordel bruges, da denne har de nødvendige rettigheder.

Tjek evt. i IIS manageren at den er sat ordentlig.

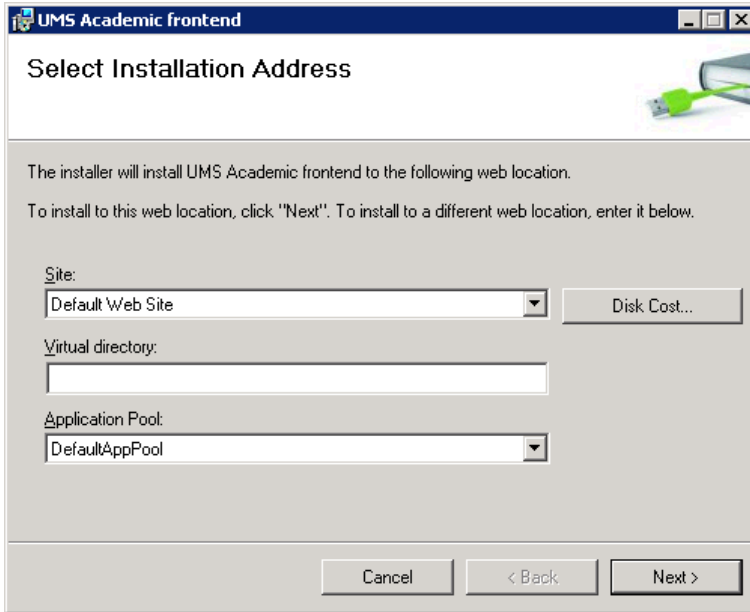


Gå i "Advanced Settings" og tjek at "Identity", under "Process Model", er sat til den ønskede bruger.

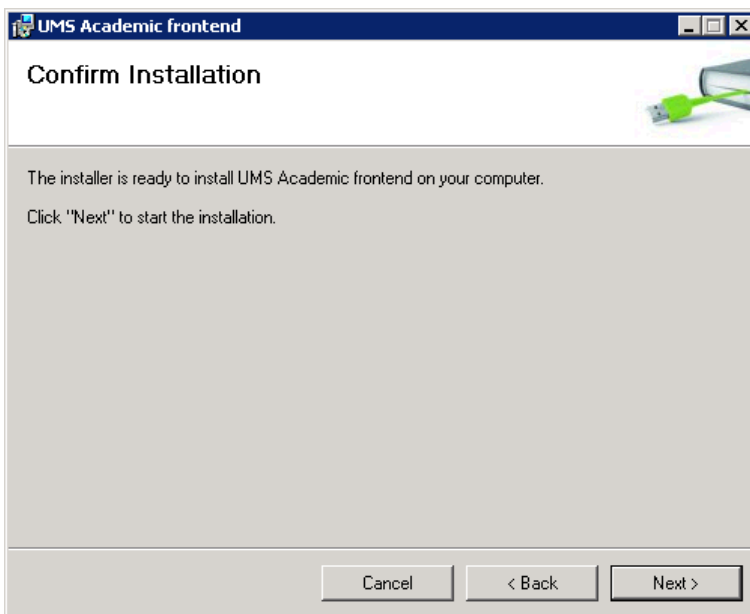
Ellers indtastes brugernavn og kodeord.



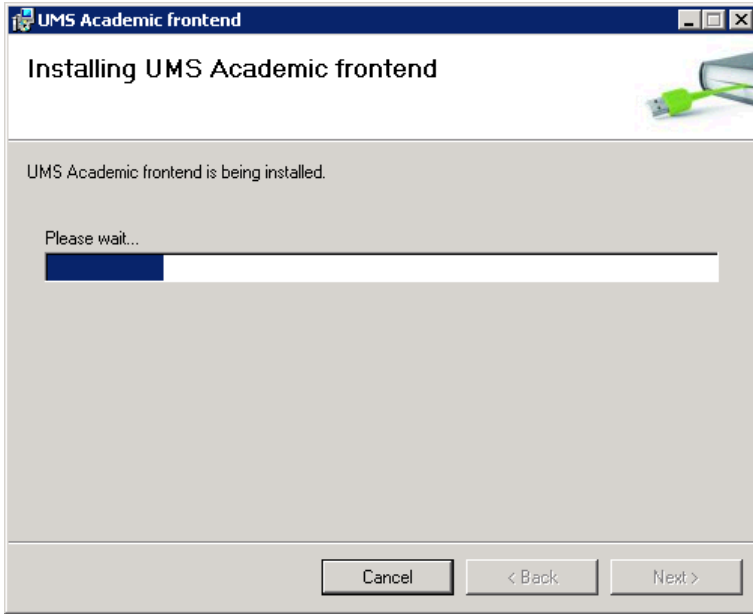
Make IT Logic



4. Klik "Next >" for at bruge "Default Web Site".



Vælg "Next >" for at starte installation.



Husk at kopiere licensfilerne ind!

## Licens

Efter endt installation skal følgende filer kopieres ind i bin kataloget under UMS Web sitet:

- Usermanagement.ini og \*License.Key