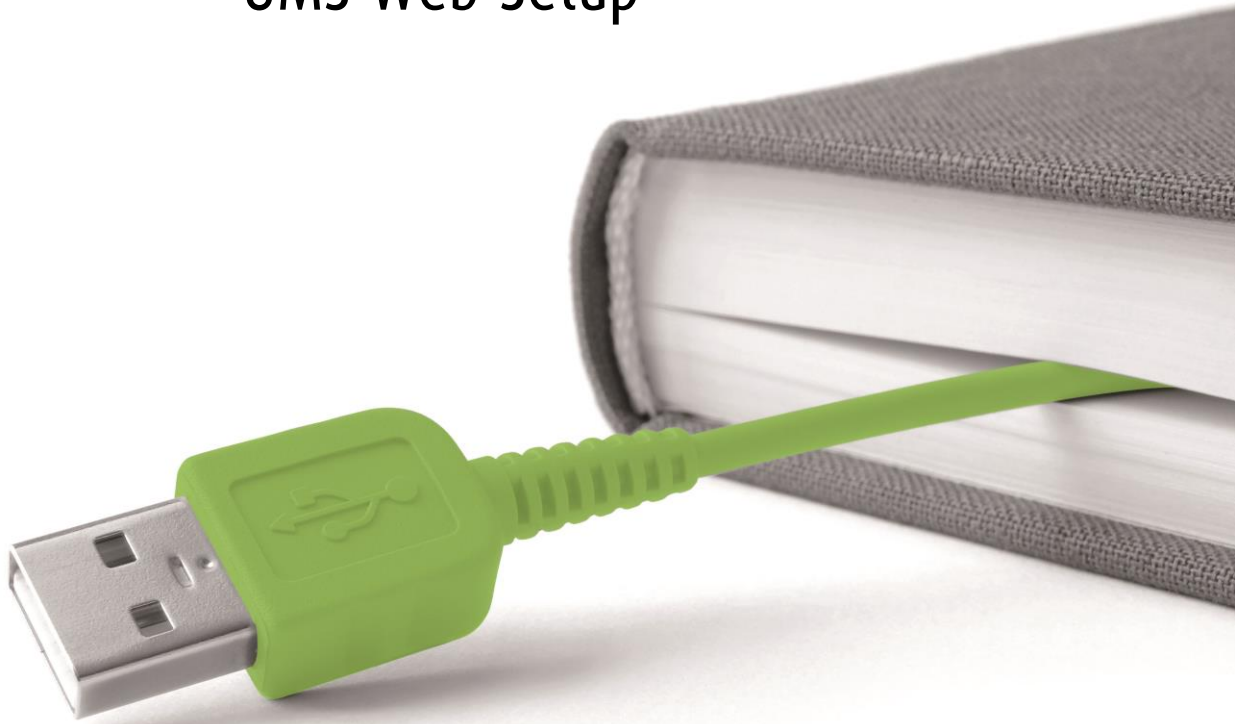




UMS Web Setup



www.inlogic.dk

Contents

UMS Web Setup manual.....	3
Operating system	3
Windows Server 20012 x64 or Windows Server 20012 x64 R2.....	3
What needs to be installed?	3
Internet Information Service 7 and ASP.NET 4.5 (.NET Framework 4.5 Features).....	3
Services.....	9
ASP.NET State Service	9
Install UMS Academic frontend	10
License.....	13

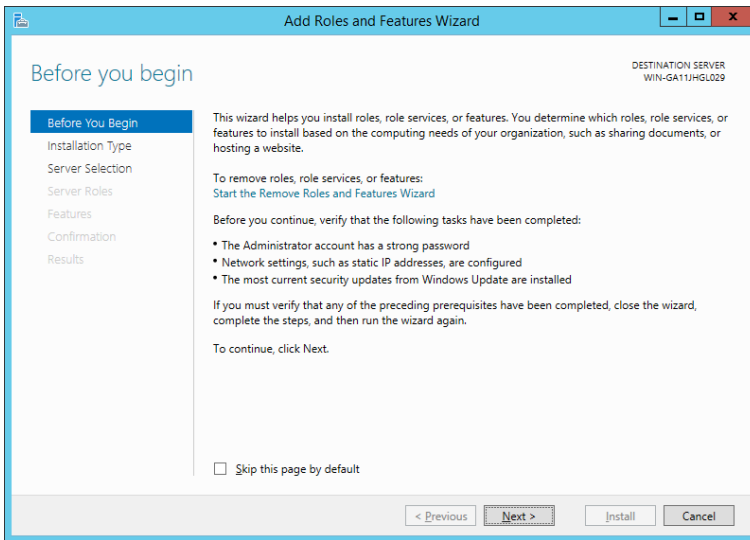
UMS Web Setup manual

Operating system

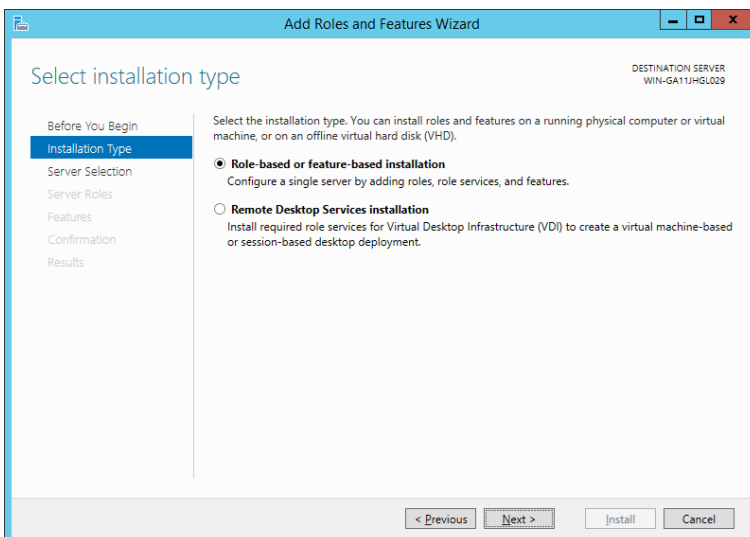
Windows Server 2012 x64 or Windows Server 2012 x64 R2.

What needs to be installed?

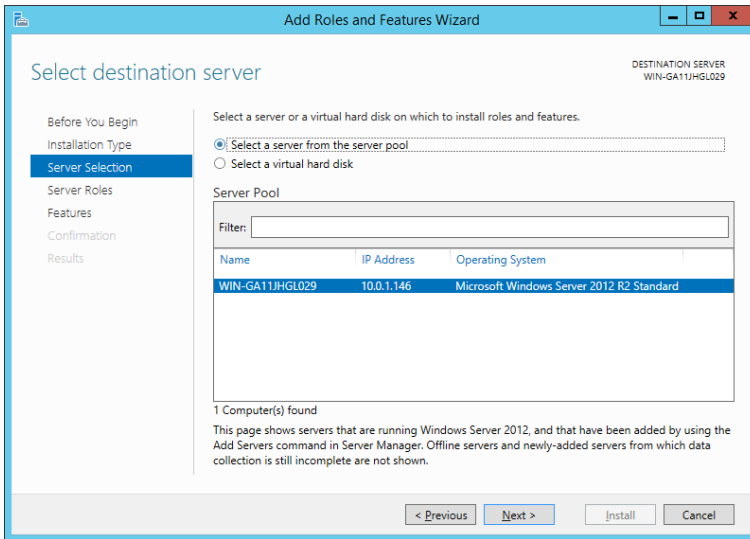
Internet Information Service 7 and ASP.NET 4.5 (.NET Framework 4.5 Features) ROLES AND FEATURES



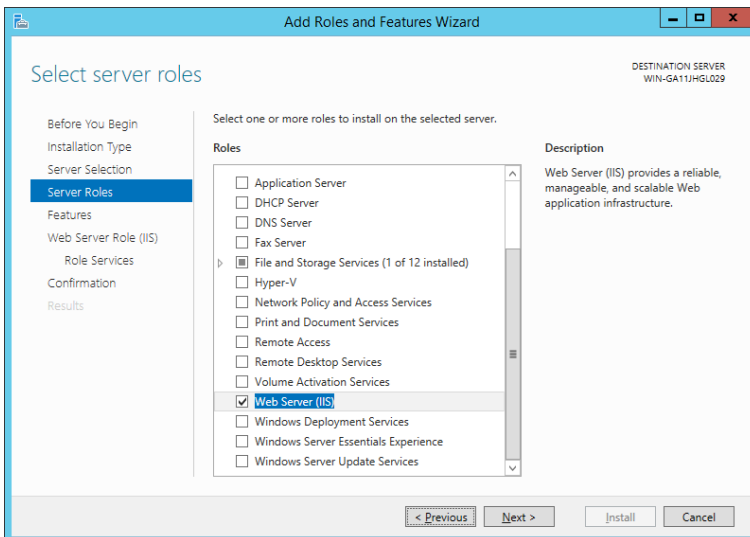
→ Next



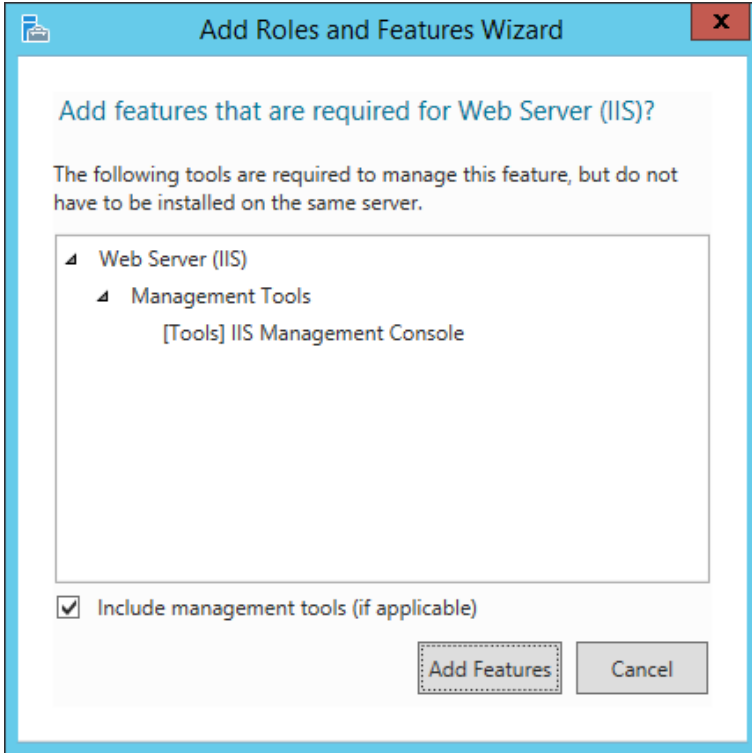
→ Next



→ Next

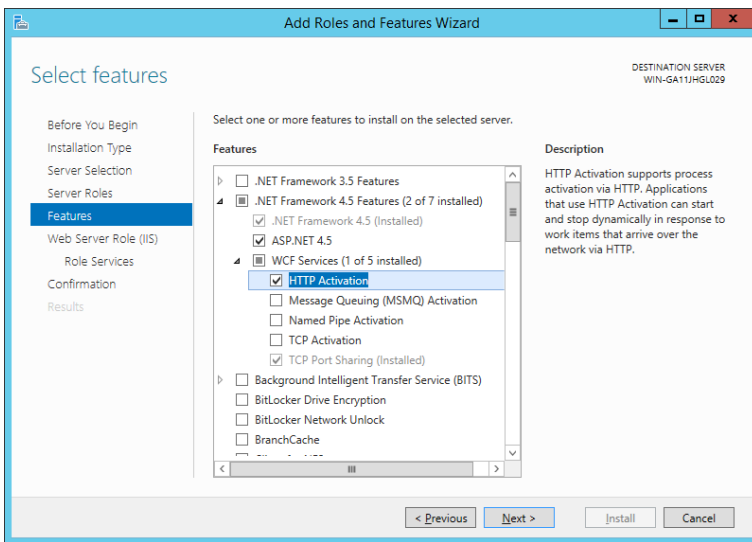


→ When "Web Server" is marked you are asked to add features.

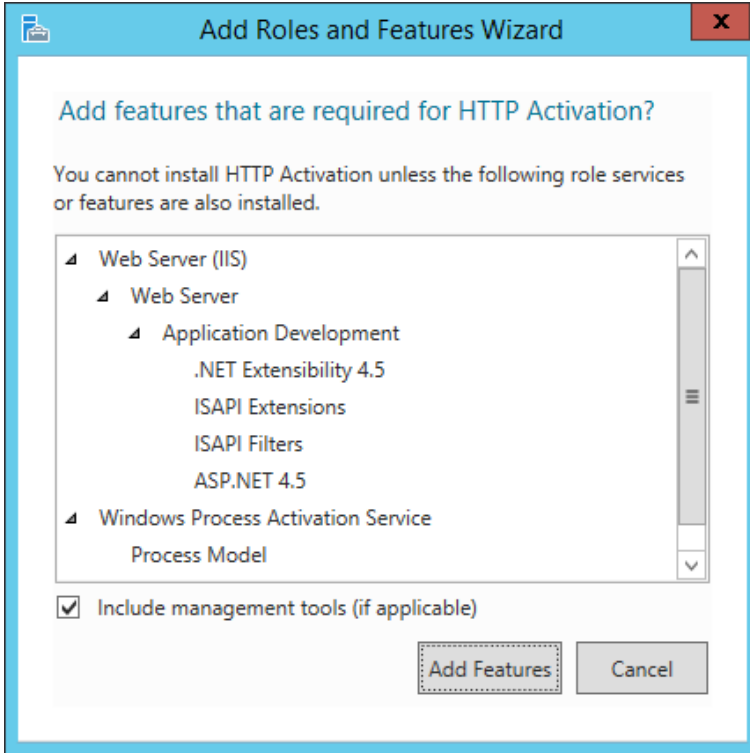


- ➔ Add Features
- ➔ Next

Mark "ASP .NET 4.5" and under "WCF Services" mark "HTTP Activation"



- ➔ When "Http Activation" is marked you are asked to add features.



- Add Features
- Next
- Next

Install all features except the ones not checked below.

Select role services

Before You Begin
Installation Type
Server Selection
Server Roles
Features
Web Server Role (IIS)
Role Services
Confirmation
Results

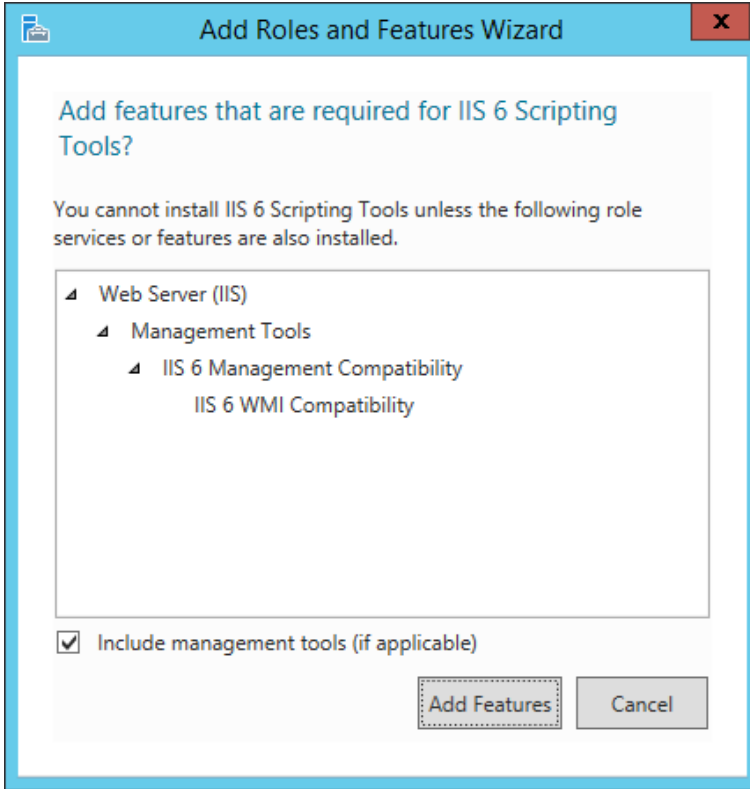
Select the role services to install for Web Server (IIS)

Role services

- Web Server
 - Common HTTP Features
 - Default Document
 - Directory Browsing
 - HTTP Errors
 - Static Content
 - HTTP Redirection
 - WebDAV Publishing
 - Health and Diagnostics
 - Performance
 - Static Content Compression
 - Dynamic Content Compression
 - Security
 - Request Filtering
 - Basic Authentication
 - Centralized SSL Certificate Support
 - Client Certificate Mapping Authentication
 - Digest Authentication
 - IIS Client Certificate Mapping Authentication
 - IP and Domain Restrictions
 - URL Authorization
 - Windows Authentication
 - Application Development
 - .NET Extensibility 3.5
 - .NET Extensibility 4.5
 - Application Initialization
 - ASP
 - ASP.NET 3.5
 - ASP.NET 4.5
 - CGI
 - ISAPI Extensions
 - ISAPI Filters
 - Server Side Includes
 - WebSocket Protocol
 - FTP Server
 - Management Tools
 - IIS Management Console
 - IIS 6 Management Compatibility
 - IIS 6 Metabase Compatibility
 - IIS 6 Management Console
 - IIS 6 Scripting Tools
 - IIS 6 WMI Compatibility
 - IIS Management Scripts and Tools
 - Management Service

NB. Regarding "Health and Diagnostics" only "HTTP Logging" is checked.

→ When "IIS 6 Scripting Tools" is marked you are asked to add features.



- Add Features
- Next
- Install

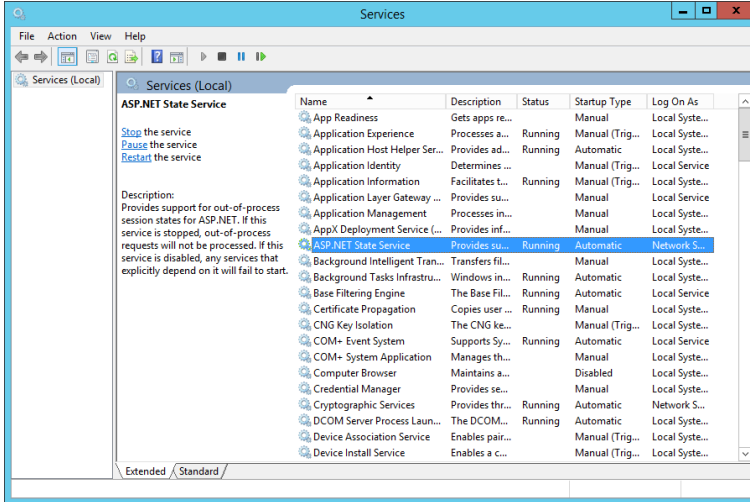
Verify that the installation has completed successfully

- Close

Services

ASP.NET State Service

This service must be started and set to automatic start.



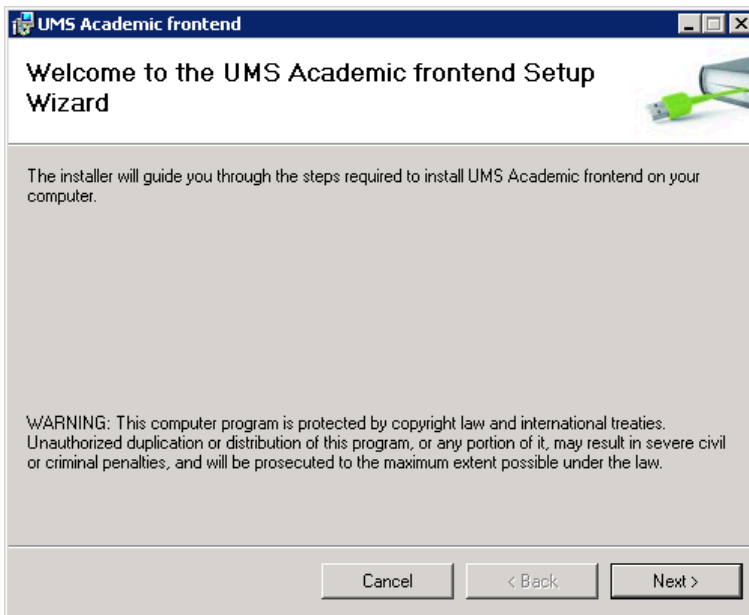
Install UMS Academic frontend

Download UMS Web from our website [http://downloads.inlogic.dk/Latest released stable version/UMSFrontendSetup.zip](http://downloads.inlogic.dk/Latest%20released%20stable%20version/UMSFrontendSetup.zip) and follow below guidance.

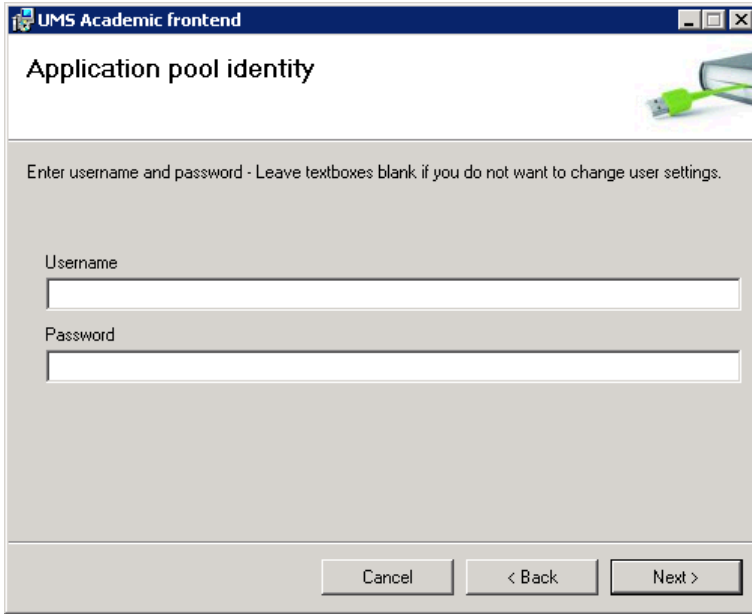
1. Uninstall prior versions of UMS Academic frontend. (if it exists).
2. Start the installation using "setup.exe".



Choose "Run".

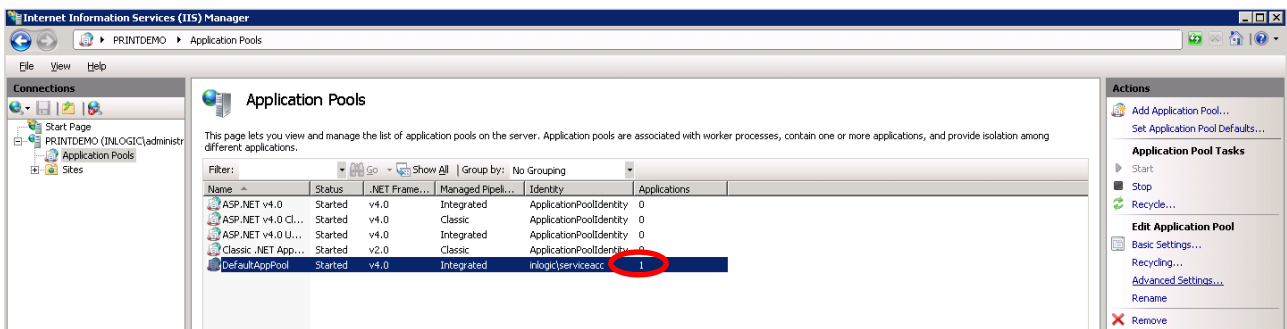


Choose "Next".



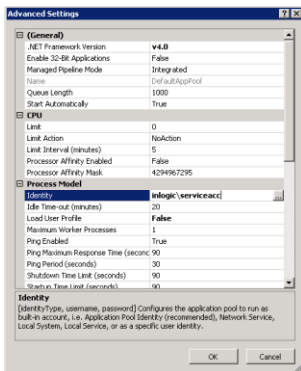
- Specify username (domain\username) and password, is one of the following modules are to be used: "GuestUser", "MassUsers" or "Groupfolder". The user, responsible for running the "Scheduled Tasks" can be used as he has the necessary rights.

Verify that the settings is correct in IIS.

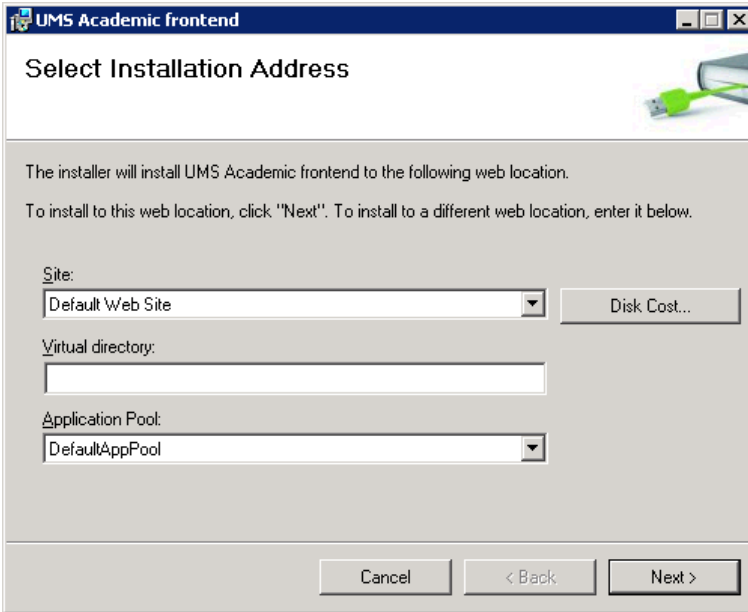


Go to "Advanced Settings" and verify that "Identity", under "Process Model", has been set to the desired user.

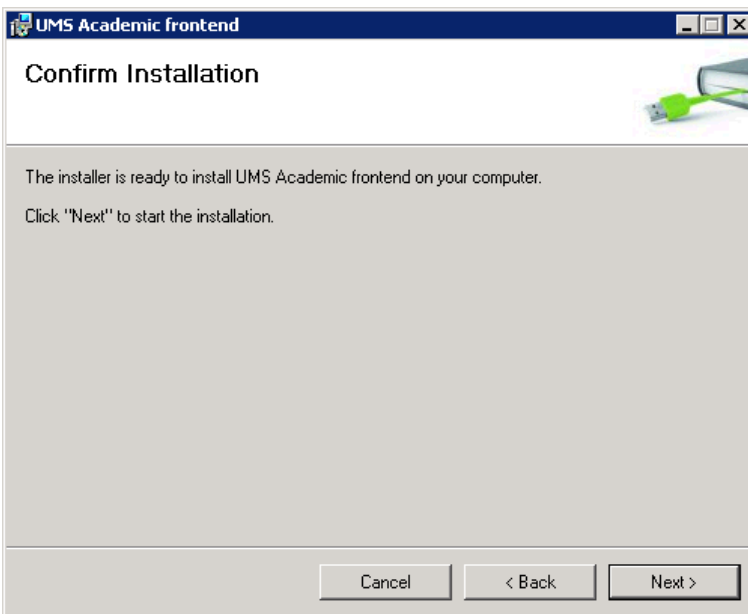
If not then please enter username and password.



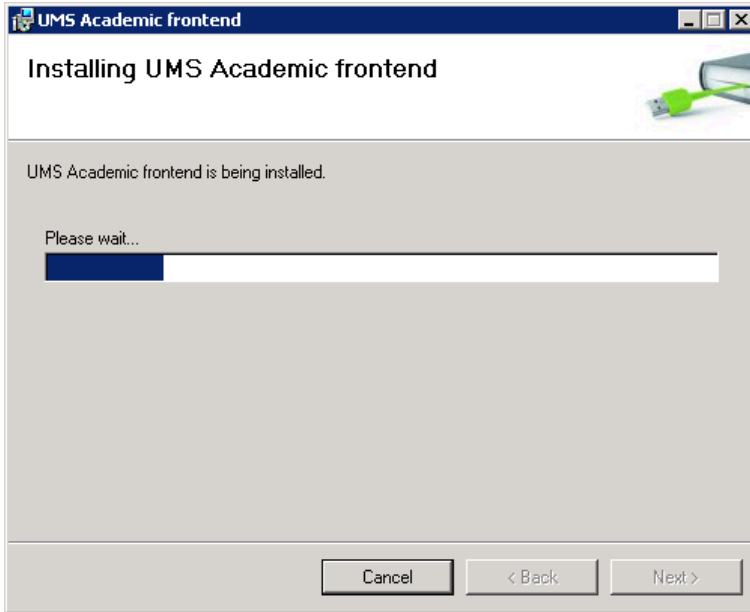
Make IT Logic



4. Click "Next >" to use "Default Web Site".



Choose "Next >" to start the installation.



Remember to copy/paste the license files into UMS!

License

When the installation has finished the following files must be copied into the bin-folder for the UMS Website:

- Usermanagement.ini og *License.Key